

Aster Skyview

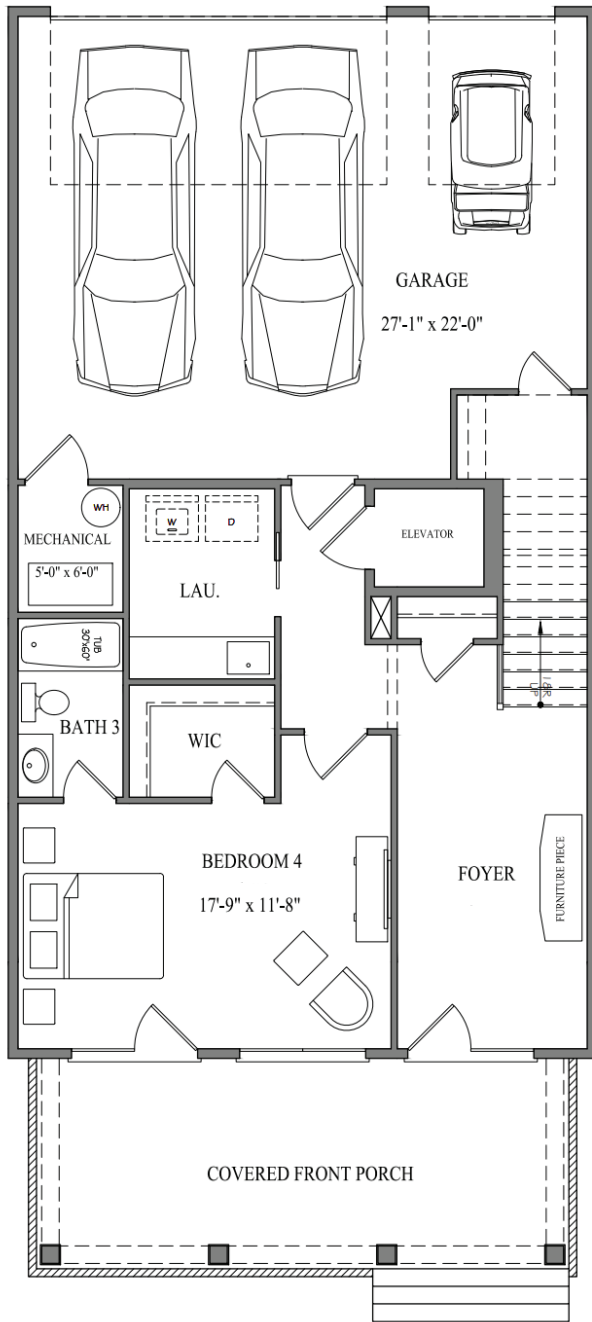
3 or 4 BR | 3.5 BA | 2977 SQ FT

LOT P71

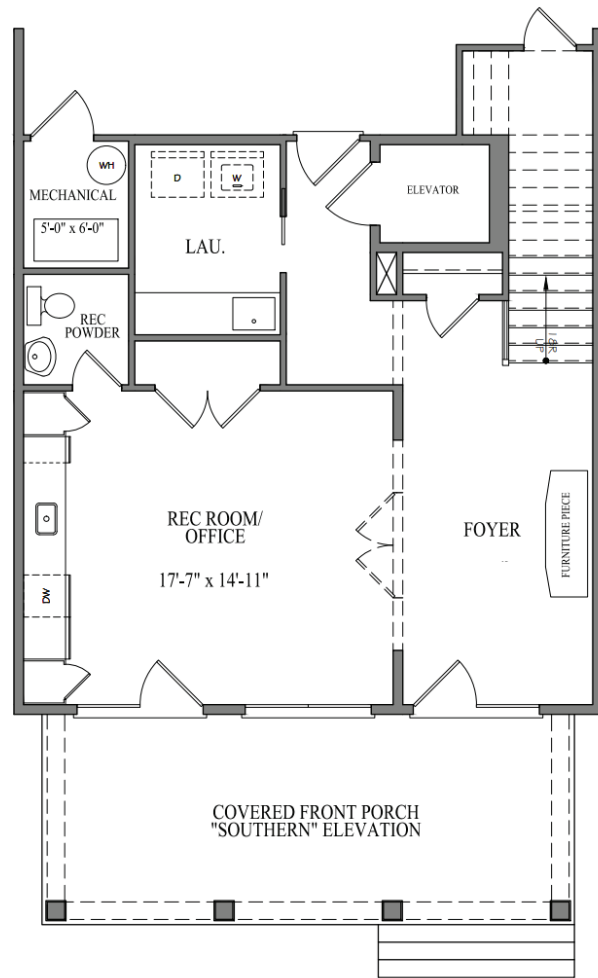


airabella
LAKE OCONEE

Terrace/Rec Room Option



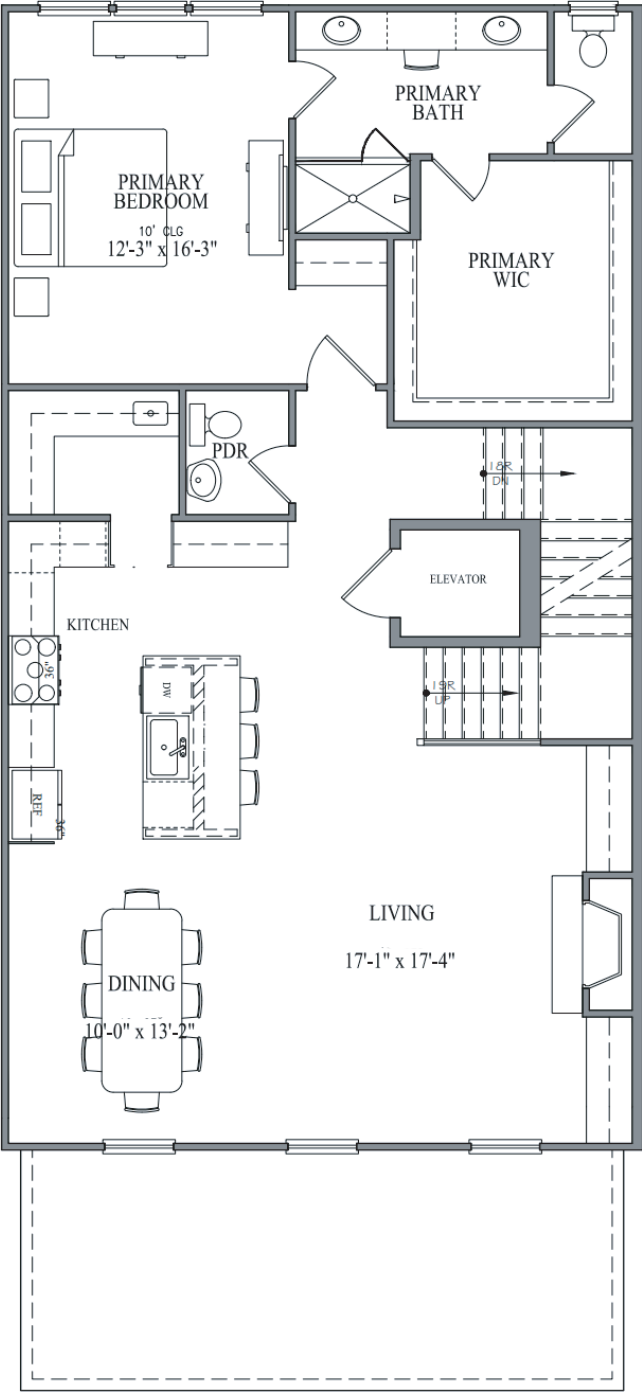
SQUARE FOOTAGES	
TERRACE FLOOR	755
FIRST FLOOR	1400
SECOND FLOOR	822
TOTAL (HEATED)	2977
SKY VIEW	368
GARAGE	645
FRONT COV. PORCH	253



Serene Living

Savor the charm of the outdoors with an oversized front porch, a perfect spot for unwinding and enjoying the energy of the Airabella community. Adding to the charming ambiance, each residence is adorned with its own gas lantern, evoking a warm and inviting atmosphere that welcomes you home.

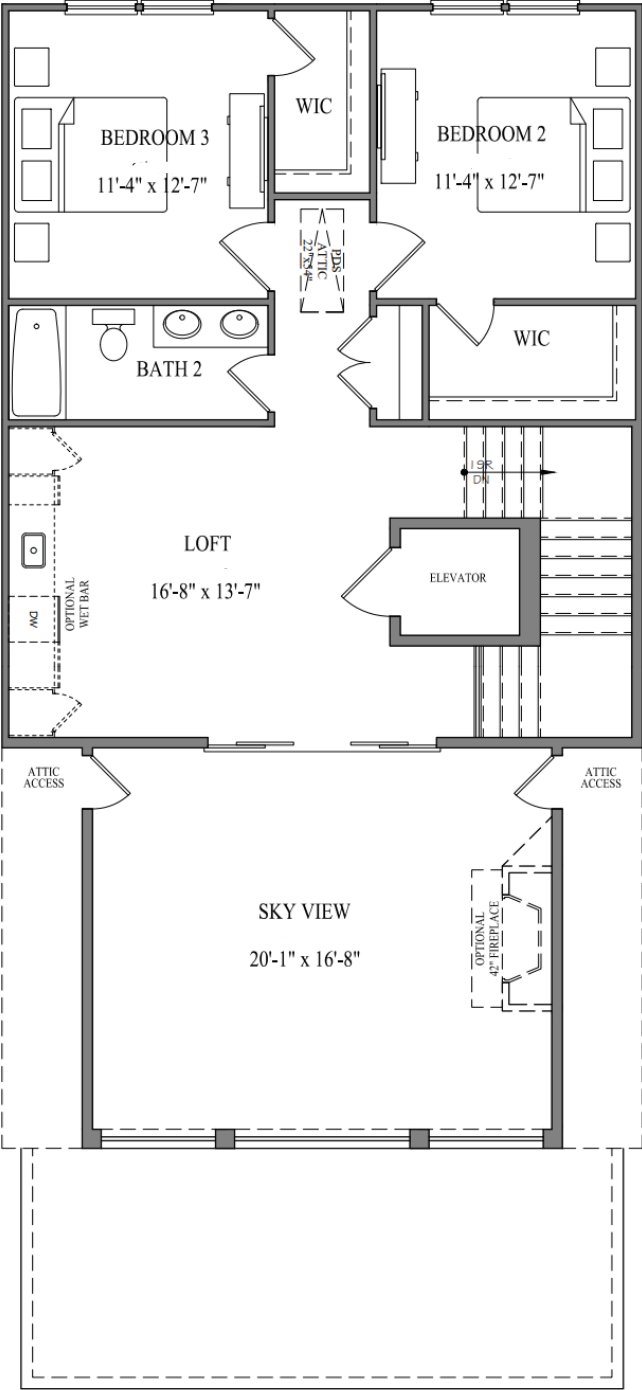
Second Floor



Bright Living

Step into spacious, light-filled interiors adorned with premium finishes and state-of-the-art amenities. Embrace the convenience of a modern gourmet kitchen, complete with a butler's pantry for added storage and preparation space. With ample entertaining areas and a private elevator for seamless access, every detail has been thoughtfully curated to enhance your living experience.

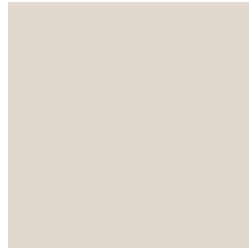
Third Floor



Luxurious Living

Experience stunning views of the lush greens of the nearby golf course from your private third-story sky veranda. Conveniently access a curated selection of retail options, all within a short walk or golf cart ride away.

Design Elements



BODY

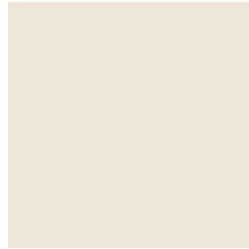
Siding: SW 6205 Comfort Gray

Shutters: SW 7570 Egret



ROOF

Colonial Slate



TRIM

SW 7013 Ivory Lace

WINDOWS

Andersen 100, Black

DOORS

Painted SW 7570 Egret



HARDWARE

Schlage Century Sectional
Satin Brass



GAS LANTERN

The Coppersmith Georgetown Gas
Lantern with Gooseneck Mount

Each residence showcases contemporary architecture and top-of-the-line fixtures. With an emphasis on creating spaces that blend seamlessly with the surrounding environment, the homes at Airabella Lake Oconee provide a serene living experience with direct access to its many amenities.