

Aster Skyview

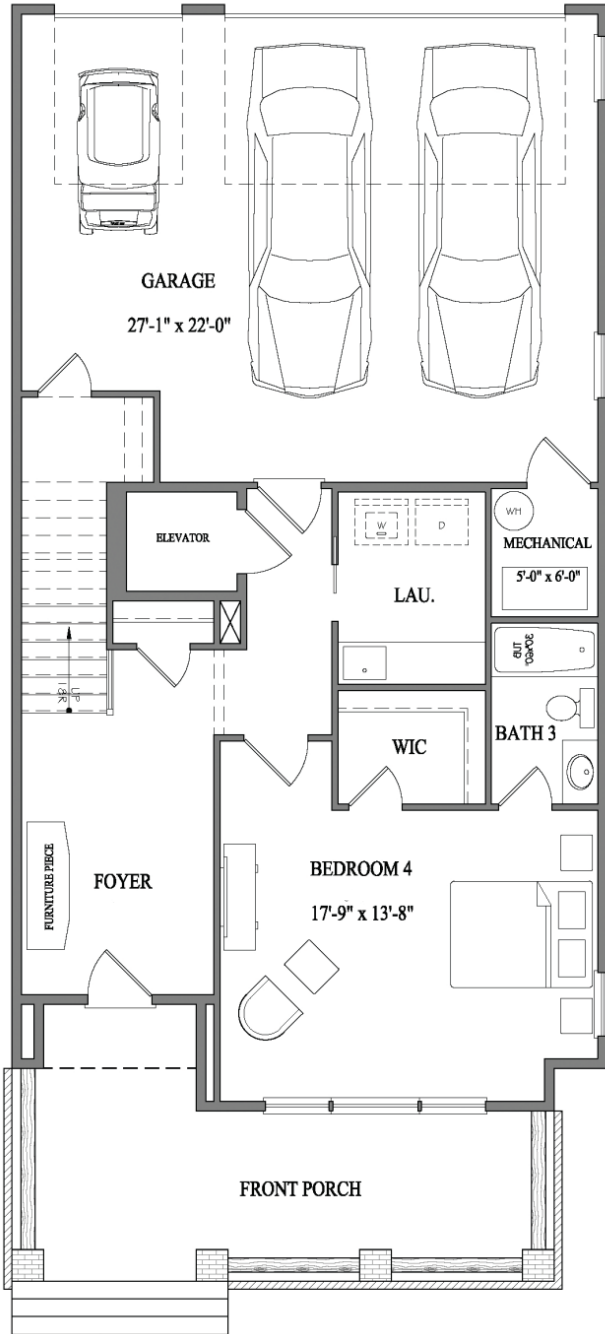
3 or 4 BR | 3.5 BA | 3020 SQ FT

LOT P69

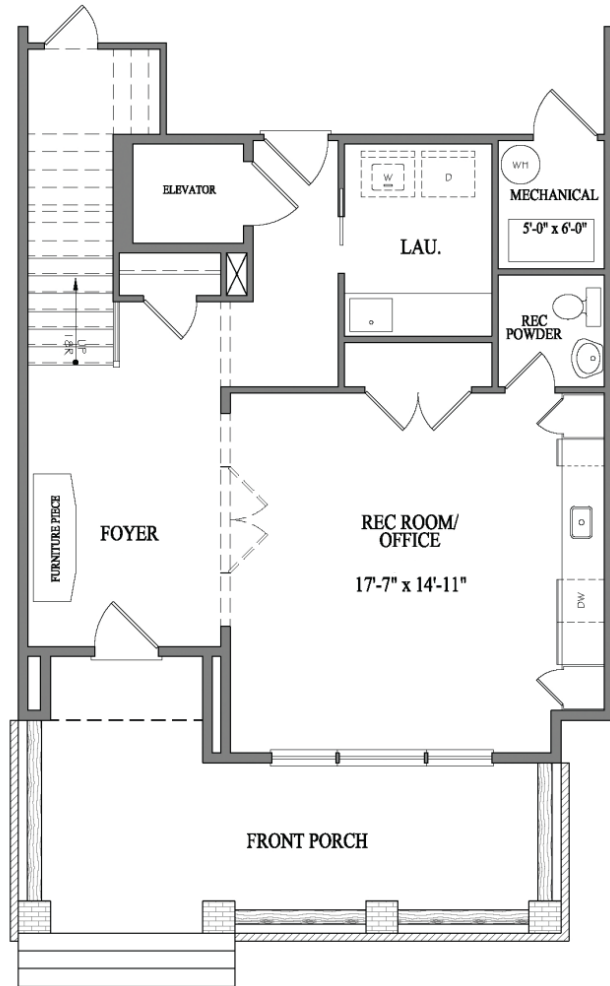


airabella
LAKE OCONEE

Terrace/Rec Room Option



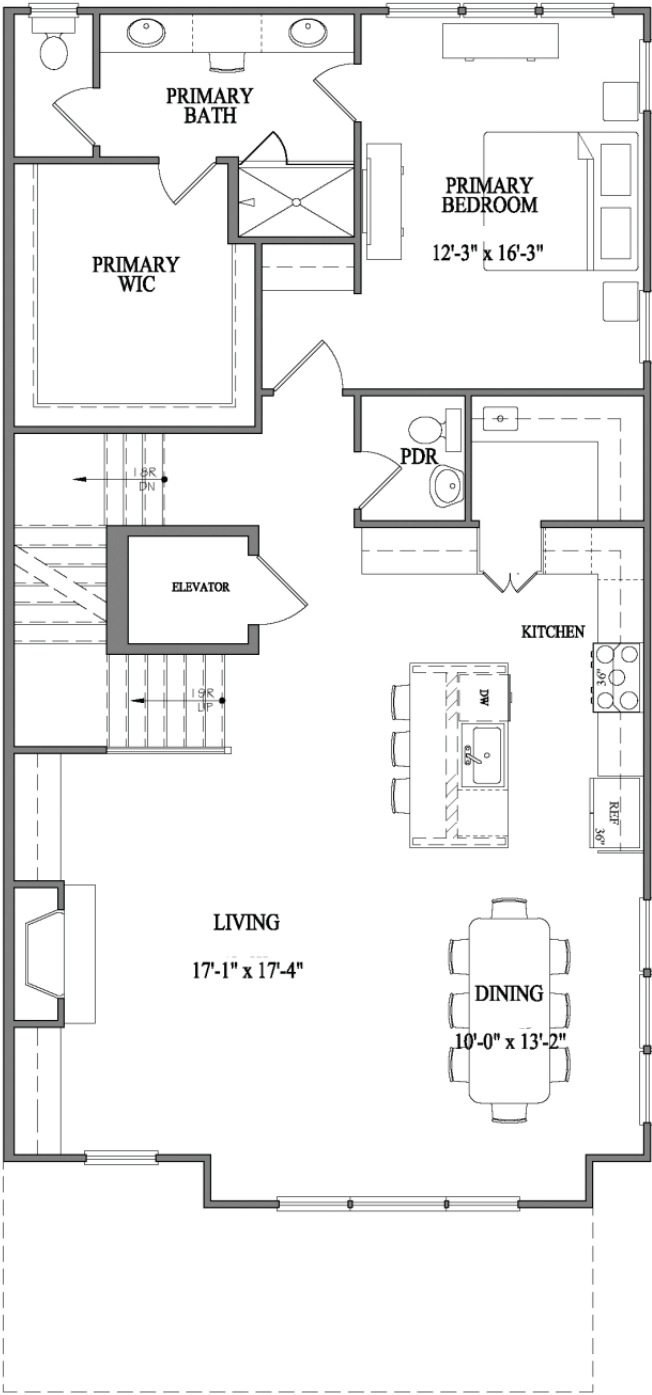
SQUARE FOOTAGES	
TERRACE FLOOR	764
FIRST FLOOR	1434
SECOND FLOOR	822
TOTAL (HEATED)	3020
SKY VIEW	328
GARAGE	645
FRONT PORCH	247



Serene Living

Savor the charm of the outdoors with an oversized front porch, a perfect spot for unwinding and enjoying the energy of the Airabella community. Adding to the charming ambiance, each residence is adorned with its own gas lantern, evoking a warm and inviting atmosphere that welcomes you home.

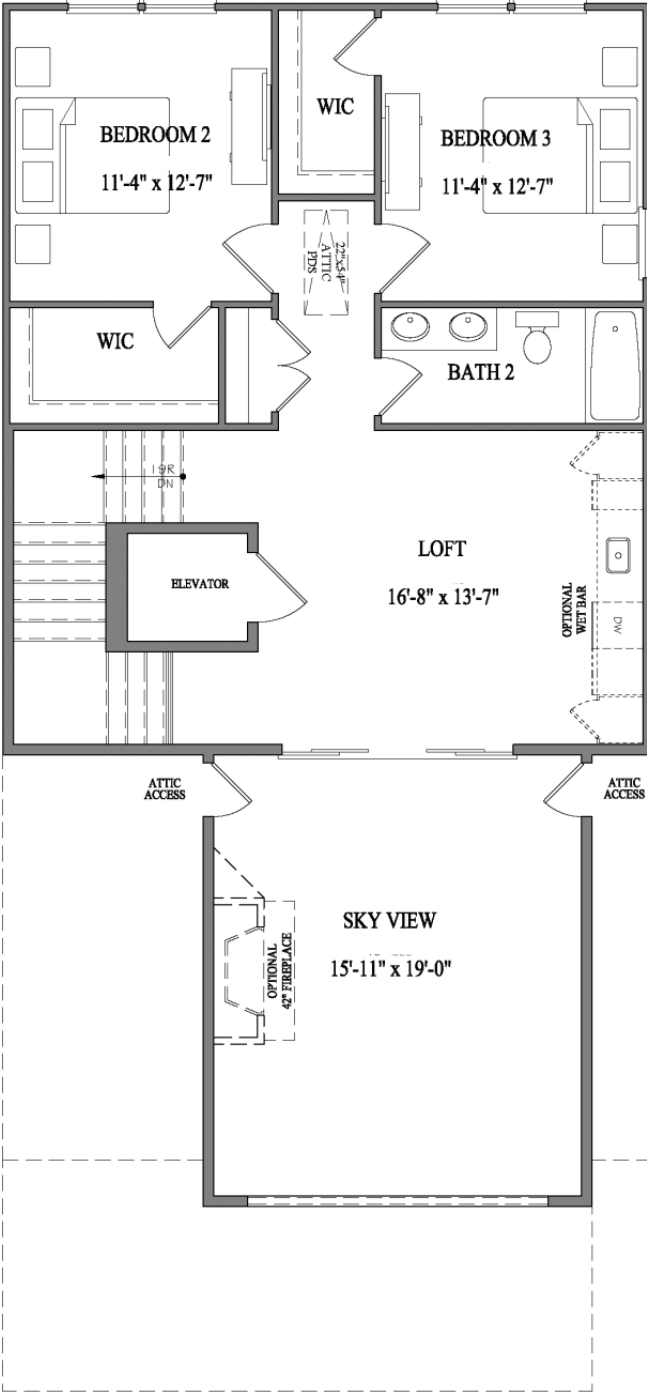
Second Floor



Bright Living

Step into spacious, light-filled interiors adorned with premium finishes and state-of-the-art amenities. Embrace the convenience of a modern gourmet kitchen, complete with a butler's pantry for added storage and preparation space. With ample entertaining areas and a private elevator for seamless access, every detail has been thoughtfully curated to enhance your living experience.

Third Floor



Luxurious Living

Experience stunning views of the lush greens of the nearby golf course from your private third-story sky veranda. Conveniently access a curated selection of retail options, all within a short walk or golf cart ride away.

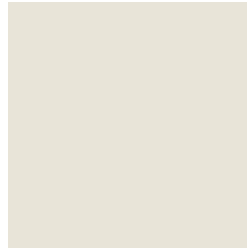
Design Elements

BODY

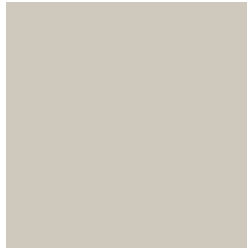
Horizontal Siding:
SW 7645 Thunder Gray



Vertical Siding:
SW 7009 Pearly White



ROOF
Colonial Slate



TRIM
SW 7050 Useful Gray

WINDOWS

Andersen 100, Black

DOORS

Stained Wood
Opaque Solid SW 6258 Tricorn Black



HARDWARE
Schlage Century Sectional
Matte Black Fc58cen622



GAS LANTERN
Coppersmith Conception with
Classic Moustache

Each residence showcases contemporary architecture and top-of-the-line fixtures. With an emphasis on creating spaces that blend seamlessly with the surrounding environment, the homes at Airabella Lake Oconee provide a serene living experience with direct access to its many amenities.